



CLUTCHCO INTERNATIONAL

EMERGENCY 24-HOUR SALES & SERVICE AVAILABLE.



STOCK

STOCK MAY VARY BY LOCATION

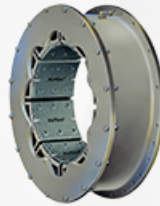
LARGEST **DANFOSS AIRFLEX INVENTORY**, ASSEMBLIES & PARTS IN THE NATION.



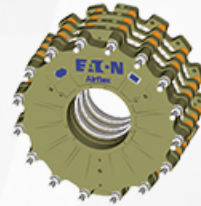
Type **CB**



Type **EB**



Type **VC**



Type **WCB**



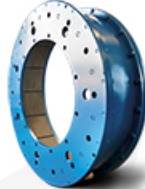
Type **WCSB**



Carlson
Calipers



Carlson
Clutches



DY-A-FLEX



Emsco
Clutches



National
Clutches

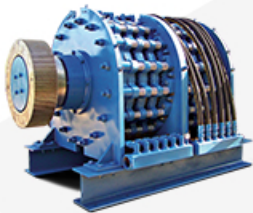


PO
Clutches



Wichita

CUSTOM PRODUCTS



636 WCB
Brake & Cradle



736 WCSB
Brake & Cradle



Brake & Cradle
With Cover



Cooling Packages



Top Drive Test Stands
& Dynamometers

IN HOUSE MACHINE & MECHANIC SHOP
24-HOUR SALES & MECHANICS AVAILABLE
LOCATED AT CORPORATE FACILITY

FULL SERVICE MACHINE SHOP WITH MACHINING CAPABILITIES UP TO 102" SWING AND 72" IN LENGTH, CNC TURNING CAPABILITIES UP TO 50" DIAMETER, SHAFT WORK UP TO 120" IN LENGTH AND 26" IN DIAMETER AS WELL AS INTERNAL AND EXTERNAL KEYWAYS, GEAR CUTTING, THREADING, WATER JETTING, SANDBLASTING AND WELDING. EXPEDITED TURNAROUND AVAILABLE, AS WELL AS 24-HOUR ON-SITE MECHANICAL SERVICE OPERATION, EXTENDING INTERNATIONALLY.



CORPORATE HEADQUARTERS
HOUSTON & INTERNATIONAL
HUMBLE, TX
PHONE: 281-446-1297
FAX: 281-446-1330



CLUTCHCO INTERNATIONAL CLUTCHCOINTL.COM

Disclaimer: Clutchco International Inc. is an independent manufacturer of replacement parts. Clutchco is neither a licensee, nor is it affiliated with any of the Original Equipment Manufacturers named throughout unless specifically noted. Any names and trademarks used herein are solely for identification purposes and are not intended to cause confusion as to the source of the parts. The OEM's named throughout do not sponsor, promote, warranty or endorse Clutchco's products. Part number usage is for identification purposes only.

UPDATED 05/2023